

---

# Air Up Shelf

---

Pinuccio Borgonovo

2014



Floor standing modular system with plinth of superimposed elements in mink colour leather effect laminated wood. The units (fronts/top) are covered by 6mm tempered painted glass as per samples, in the bright or satin version. The inside is made of leather effect laminated wood in mink colour. Bright anodised aluminium metal parts. Base and spacers in mink colour leather effect laminated wood. For room divider or double sided compositions a 6mm tempered painted glass back in the same finish of the unit is available. 12mm tempered extralight glass side, painted in the part corresponding to the unit's side. 12mm tempered extralight glass top. Modules can be placed side by side (max lenght 360cm) or superimposed (max 2 modules).

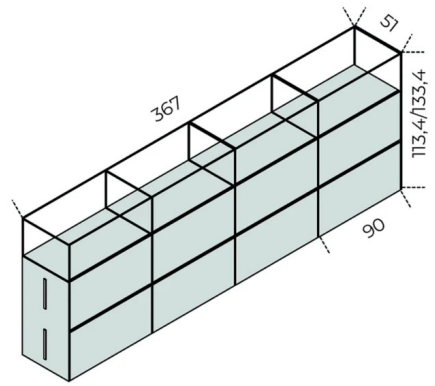
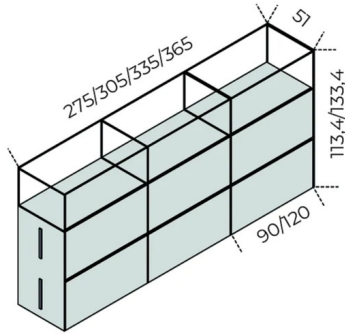
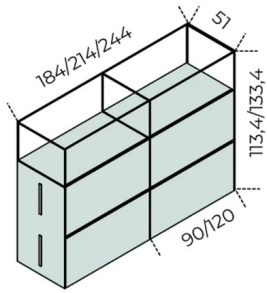
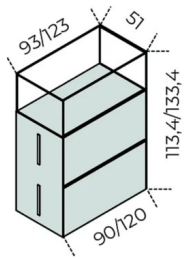
Available while stock lasts.

## Cm (L x P x H)

51 x 0 x 109  
51 x 0 x 129  
90 x 48.3 x 0.6  
120 x 48.3 x 0.6  
90 x 0 x 44.5  
120 x 0 x 44.5  
90 x 0 x 34.5  
120 x 0 x 34.5  
93 x 51 x 1.2  
123 x 51 x 1.2  
184 x 51 x 1.2  
214 x 51 x 1.2  
244 x 51 x 1.2  
275 x 51 x 1.2  
305 x 51 x 1.2  
335 x 51 x 1.2  
365 x 51 x 1.2  
367 x 51 x 1.2  
8 x 0 x 21  
8 x 0 x 8  
0 x 0 x 0

## Inches (L x P x H)

20<sup>3</sup>/<sub>4</sub> x 0 x 43  
20<sup>3</sup>/<sub>4</sub> x 0 x 51  
35<sup>1</sup>/<sub>2</sub> x 19<sup>3</sup>/<sub>4</sub> x 1/<sub>4</sub>  
47<sup>1</sup>/<sub>4</sub> x 19<sup>3</sup>/<sub>4</sub> x 1/<sub>4</sub>  
35<sup>1</sup>/<sub>2</sub> x 0 x 17<sup>3</sup>/<sub>4</sub>  
47<sup>1</sup>/<sub>4</sub> x 0 x 17<sup>3</sup>/<sub>4</sub>  
35<sup>1</sup>/<sub>2</sub> x 0 x 13<sup>3</sup>/<sub>4</sub>  
47<sup>1</sup>/<sub>4</sub> x 0 x 13<sup>3</sup>/<sub>4</sub>  
36<sup>3</sup>/<sub>4</sub> x 20<sup>3</sup>/<sub>4</sub> x 1/<sub>2</sub>  
48<sup>1</sup>/<sub>2</sub> x 20<sup>3</sup>/<sub>4</sub> x 1/<sub>2</sub>  
72<sup>1</sup>/<sub>2</sub> x 20<sup>3</sup>/<sub>4</sub> x 1/<sub>2</sub>  
84<sup>1</sup>/<sub>2</sub> x 20<sup>3</sup>/<sub>4</sub> x 1/<sub>2</sub>  
96<sup>1</sup>/<sub>4</sub> x 20<sup>3</sup>/<sub>4</sub> x 1/<sub>2</sub>  
108<sup>1</sup>/<sub>2</sub> x 20<sup>3</sup>/<sub>4</sub> x 1/<sub>2</sub>  
120<sup>1</sup>/<sub>4</sub> x 20<sup>3</sup>/<sub>4</sub> x 1/<sub>2</sub>  
132 x 20<sup>3</sup>/<sub>4</sub> x 1/<sub>2</sub>  
143<sup>3</sup>/<sub>4</sub> x 20<sup>3</sup>/<sub>4</sub> x 1/<sub>2</sub>  
144<sup>1</sup>/<sub>2</sub> x 20<sup>3</sup>/<sub>4</sub> x 1/<sub>2</sub>  
3<sup>3</sup>/<sub>4</sub> x 0 x 8<sup>1</sup>/<sub>2</sub>  
3<sup>3</sup>/<sub>4</sub> x 0 x 3<sup>1</sup>/<sub>4</sub>  
0 x 0 x 0



# Finishes

## Glass



Bright white



Satin white



Bright blue-grey



Satin blue-grey



Bright cadet blue



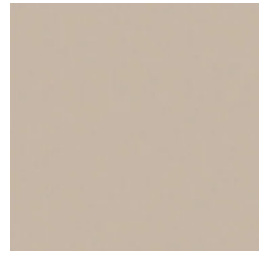
Satin cadet blue



Bright cement



Satin cement



Bright champagne



Satin champagne



Bright rose powder



Satin rose powder



Extralight



Bright taupe



Satin taupe



Bright dark grey



Satin dark grey



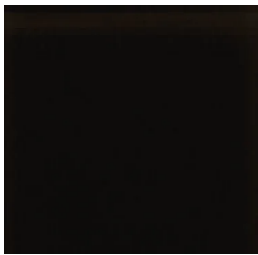
Leather effect laminated wood



Bright liquorice



Satin liquorice



Bright black



Satin black



Bright olive



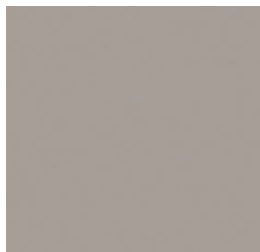
Satin olive



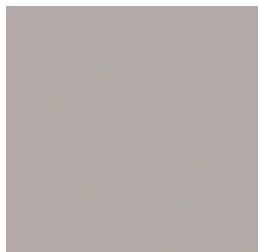
Bright green-grey



Satin green-grey

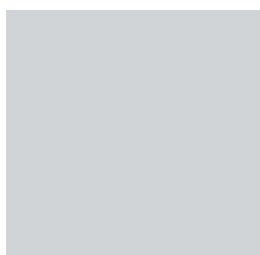


Bright mink



Satin mink

## **Metal**



Anodised aluminium